

**SPECIFICATION**

Current Rate:3 AMP  
 Insulation Resistance:1000M Ω Min.  
 Contact Resistance:20m Ω Max.  
 Dielectric voltage:1000V AC for one minute  
 Operation Temperature:-40°C to +105°C

**MATERIAL**

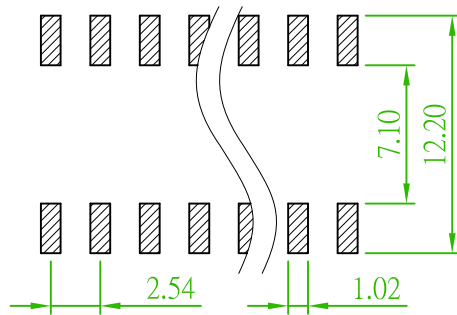
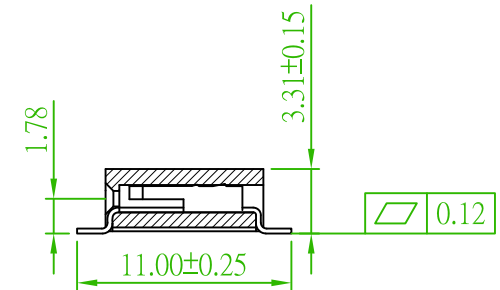
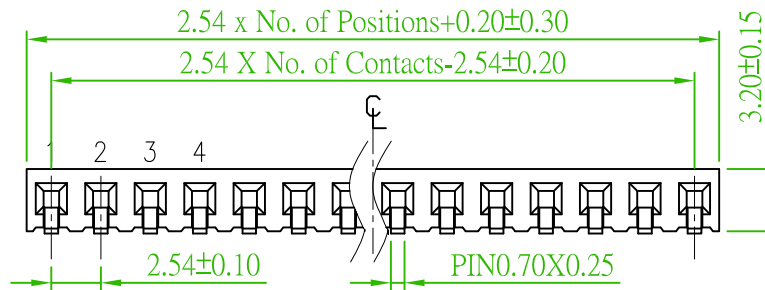
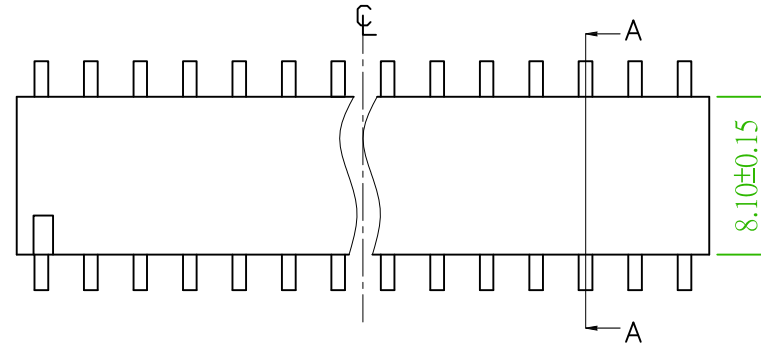
Housing: High Temperature Thermoplastic,UL94V-0  
 Contact Pin:Copper Alloy  
 Tin,Gold plated◎Standard:Gold flash all over

**ORDER INFORMATION**

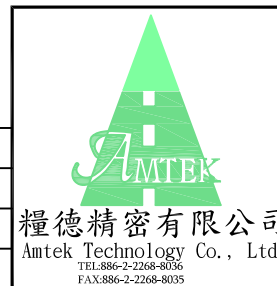
P S 1 M S - 1 X X X B X - U

◎:Standard Recommend

No. of contacts per row (02-40)	◎G:Gold Flash	S:Selective	B:Black Insulator	◎T:Tube R:Taping & Reel
	GA:5u"	SA:5u"		
	GB:10u"	SB:10u"		
	GC:20u"	SC:20u"		
	GD:30u"	SD:30u"		
	T: Tin Plated			
	TE: Tin 200u"			



Recommended PCB Layout  
 (PCB TOLERANCE ±0.05)



品名 TITLE	FEMALE HEADER 2.54mm SIDE ENTRY SMT				
品號 PART NO.	PS1MS-1XX-U			日期 DATE	09/09/2013
圖號 DRAWING NO.	PS1MS-1XX-U	版本 REV.	A	繪圖 DRAWN	Joen
客戶品號 CUSTOMER P/N		比例 SCALE	FREE	核對 CHECKED	Kimberly
公差 TOLERANCE	.X ±0.40 .XX ±0.25	單位 UNIT	mm	核准 APPROVED	John

AREA	REV.	DESCRIPTION	DATE