

ORDER INFORMATION

- - X P X

Sales No. Pitch No. of Pole 1:Single Pitch 2:Dual Pitch 1:Gray 2:Blue 3:Black 4:Green 5:Orange 6:Red 7:Transparent 8:Brown 9:White L:Rohs + Nylons

Customer Request

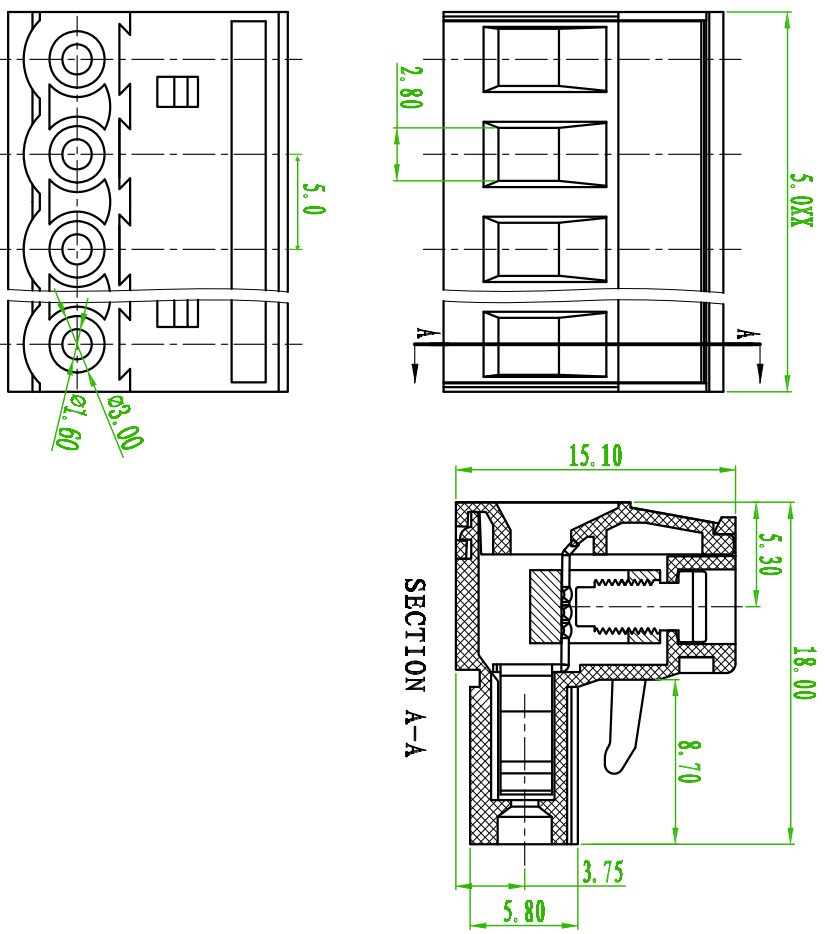


Electrical
 Standard: UL IEC
 Rated Voltage: 250V 320V
 Rated Current: 10A 15A
 Contact Resistance: 20mΩ
 Withstanding Voltage: AC 2000V for one min
 Insulation Resistance: 5000MΩ / DC 1000V

Mechanical
 Temp. Range: -40°C ~ +105°C

Material
 Housing: Nylon 66, UL94V-0
 Pin Header: Brass, Tin Plated
 Wire Ground: Phosphor Bronze, Ni Plated
 Clamp: Brass, Ni Plated

Dimensions
 Pitch: 5.0mm
 Poles: 2P-24P



TOLERANCES EXCEPT AS NOTED

	linear dimension	fillet	chamfer	short angle sid	≡	□	//	⊥
variable range	6 over to 30	30 over to 120	120 over to 480	480 over to all	all to 6	6 over to 10	10 over to 50	50 over to 120
tolerance	±0.1 to ±0.2	±0.3 to ±0.5	±0.9 to ±1	±1 to 1°	0.5 to 0.025	0.06 to 0.12	0.12 to 0.4	0.4

AREA	REV.	DESCRIPTION	DATE
B		Update Drawing	2010/07/28
			Joe

Amitek
 耀德企業有限公司
 Amitek Technology Co., Ltd.
 Tel: 86-2-2286-8000
 Fax: 86-2-2286-8000

品名	TB2EK-5.0-XXP-1X-00A-L		
品號	TB2EK-5.0-XXP-1X-00A-L		
圖號	版本	繪圖	日期
CUSTOMER P/N	B	Joe	2008/12/03
公差	SCALE	CHECKED	
.X ±0.20	FREE	Paul	
.XX ±0.15	mm	James	